

## Aero-Motive Company

**W** A Woodhead Industries, Inc. Subsidiary

### IMPORTANT SAFETY INSTRUCTIONS

Please read this manual carefully and follow its instructions. Improper use or failure to follow these instructions could result in serious injury, death or property damage. Operators should be instructed in the safe and proper use and maintenance of this product. Keep this manual for future reference.

The following safety precautions call attention to potentially dangerous conditions.



**DANGER:** Immediate hazards which **WILL** result in severe personal injury or death.



**WARNING:** Hazards or unsafe practices which **COULD** result in severe personal injury or death.



**CAUTION:** Hazards or unsafe practices which **MAY** result in *minor* personal injury or product or property damage.

### INSTALLATION



**WARNING:** Lock out all electrical power before opening any enclosures. Fuse protection should be provided. Hazards or unsafe practices **COULD** result in severe personal injury or death.

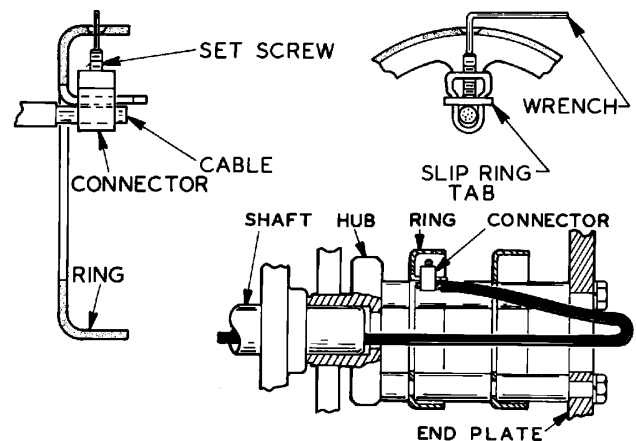
Mount the slip ring by sliding the mounting hub over the mounting shaft, snug against the drum plate of the reel, and securing it tightly with set screws. The mounting hub has a 1½" diameter bore and 2¼" depth. The drive stud (customer supplied or mounted on the reel), must protrude through the hole on the drive plate allowing a 5/8" minimum clearance to the first brush-holder in line, in order to avoid electrical contact. Drive stud should not exceed ½" diameter.



**CAUTION:** Always check continuity before connecting power. Always provide slip ring with fuse protection. Hazards or unsafe practices **MAY** result in *minor* personal injury or product or property damage.

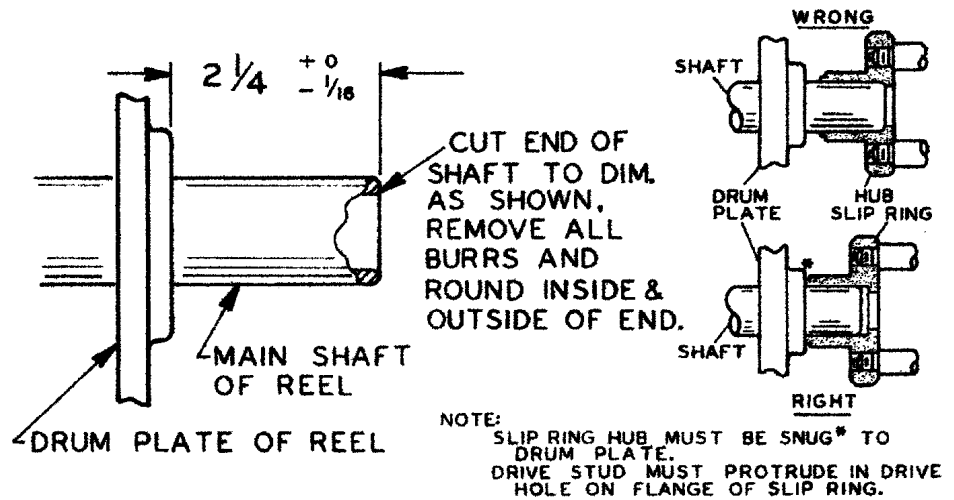
### WIRING

To complete wiring, connect one set of wires to the stud on top of each brush assembly, and the other corresponding set of wires through the main shaft to ring leads. To hook up ring closest to hub, pull wire from shaft completely through slip ring assembly, and slide wire back inside ring assembly. Then slide wire through connector under the slip ring, and tighten the connector screw by reaching through the hole provided in the ring with a hex key. Connect remaining wire straight to connector from shaft and tighten.



## MOUNTING

Slip ring hub must be snug to the drum plate. Drive stud must be protrude in drive hole on bearing flange of slip ring. Cut down shaft to dimension shown.



## SERVICE

**CAUTION:** During disassembly and assembly, always be careful to install parts in their proper places. Hazards or unsafe practices MAY result in *minor* personal injury or product or property damage.

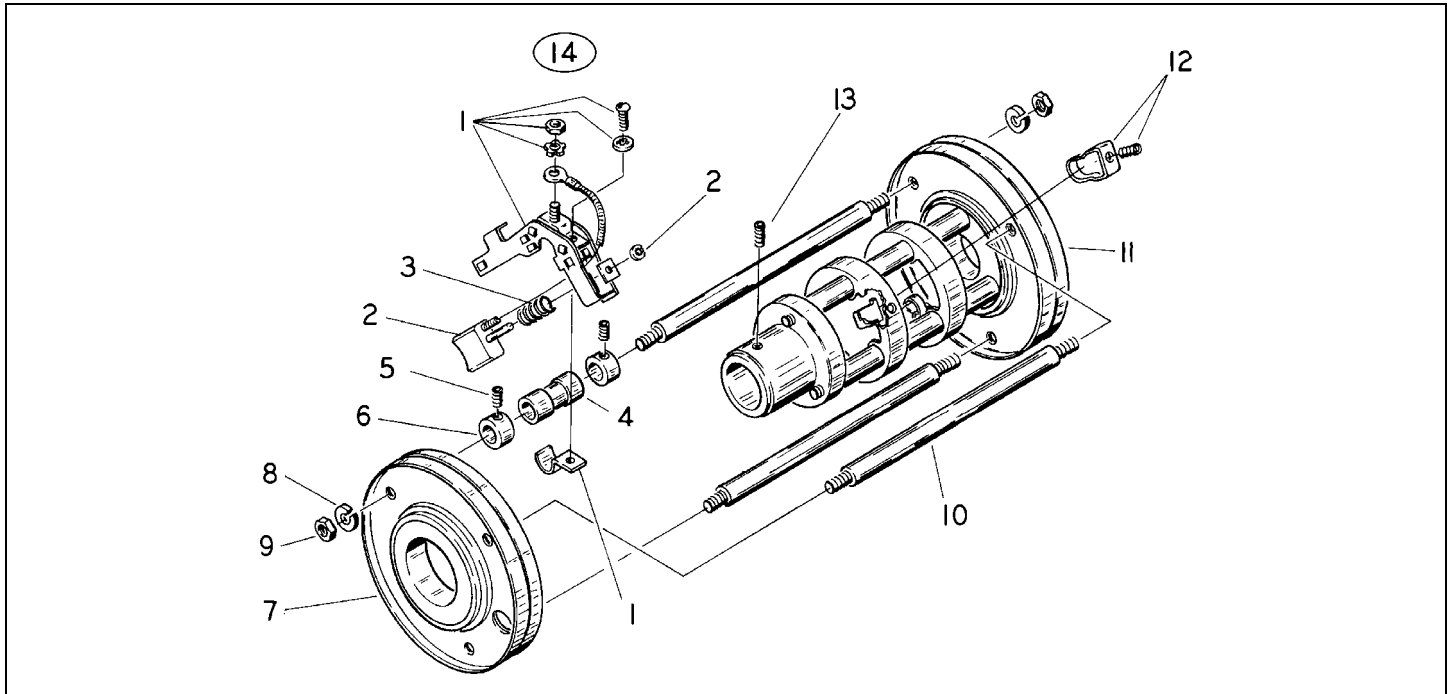
All parts illustrated (Replacement Parts Illustration) are available as repair parts should they require replacement. Install parts in their proper places. The brush-holder assembly should always be centered on the rings. Be sure that the brush surface makes complete contact with ring. Tighten set screws on collar to lock brushholder securely in place.

## MAINTENANCE

The air gap slip ring requires no lubrication, or maintenance other than periodic inspection.

**NOTE:** Never treat ring surface with any type of lubricant or cleaner.

## REPLACEMENT PARTS



Reference Number *	Part Number	Qty.	Description
1	6124700000	AR	Brushholder
2	6147900000	AR	Assembly; Brush
3	C60400129	2	Spring
4	6119100000	1	Insulator
5	00053P0103	2	Screw; Soc. HD. (#8-32 X 3/16)
6	6116000000	2	Collar
7	6124000000	1	Assembly; End Drum Bearing
8	00101P0030	6	Washer; Lock 1/4"
9	00151P0020	6	Nut; 1/4-20
10	M25460237	3	Tie Bolt (SR902 )
	M25460238	3	Tie Bolt (SR903)
	M25460239	3	Tie Bolt (SR904)
	M25460241	3	Tie Bolt (SR905)
	M25460242	3	Tie Bolt (SR906)
11	6128200000	1	Sub-Assembly; Slip Ring
	6128200001	1	Sub-Assembly; Slip Ring (SR902)
	6128200002	1	Sub-Assembly; Slip Ring (SR903)
	6128200003	1	Sub-Assembly; Slip Ring (SR904)
	6128200005	1	Sub-Assembly; Slip Ring (SR905)
	6128200006	1	Sub-Assembly; Slip Ring (SR906)
12	6148000000	1	Assembly; Connector
13	00053P0510	2	Screw; Soc. HD. (5/16-18 X 3/4)
14	6124600000	AR	Complete Brush (Including Items 1 through 4)

### Aero-Motive Company

**W** A Woodhead Industries Inc. Subsidiary  
 PO Box 2678  
 Kalamazoo, MI 49003-2678  
 (616) 337 7700  
 (800) 999 8559  
 FAX: (800) 333 6119  
 www.aeromotive.com

### AKAPP Electro Industrie

**W** A Woodhead Industries Inc. Subsidiary  
 Nijverheidsweg 14 Box 54  
 NL-3771 ME Barneveld  
 NL-3771 AB Barneveld  
 Holland  
 (31) 34 241 4022  
 FAX: (31) 34 249 2384  
 www.akapp.com

### Woodhead Connectivity LTD.

**W** A Woodhead Industries Inc. Subsidiary  
 Factory No. 9  
 Rassau Industrial Estate  
 Ebbw Vale Gwent NP3 5SD  
 United Kingdom  
 (0495) 35 0436  
 FAX: (0495) 35 0877  
 sales@wdhd.co.uk

### Woodhead Asia PTE LTD.

**W** A Woodhead Industries Inc. Subsidiary  
 401 Commonwealth Drive #04-04  
 Haw Par Technocentre  
 Singapore 0314  
 (65) 261 6533  
 FAX: (65) 479 3588  
 sales@wasia.com.sg

### Woodhead Canada LTD.

**W** A Woodhead Industries Inc. Subsidiary  
 1090 Brevik Place  
 Mississauga Ontario  
 L4W 3Y5 Canada  
 (905) 624-6518  
 FAX: (905) 624-9151  
 www.woodhead.ca