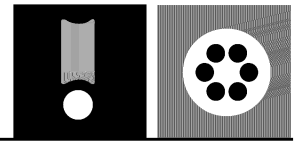
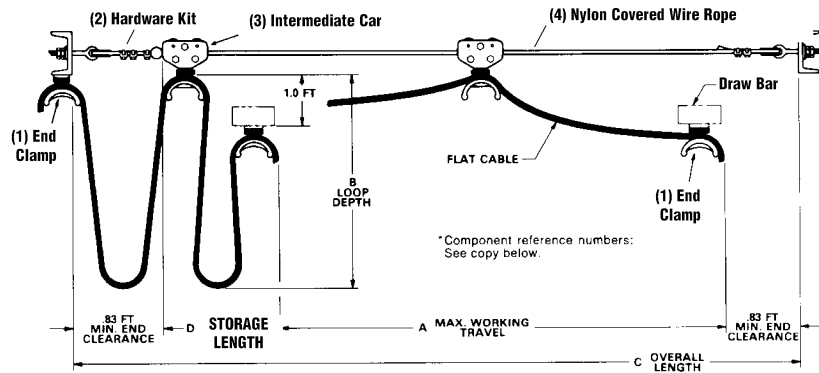


# Wire Rope Round Cable Systems



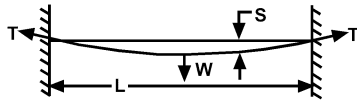
## Series 5100 SPECIFICATIONS

Neoprene Clamp Pad  
Concave Nylon Wheels  
Nylon Body  
Axles - zinc plated steel  
Fasteners - galvanized steel.



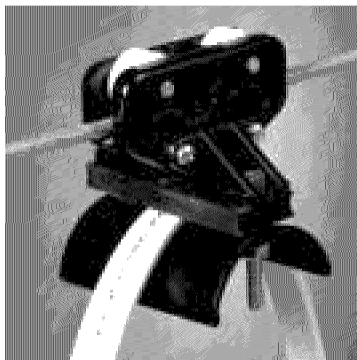
## HOW TO ORDER

Wire rope sag: When laying out a Pow-R-Tag® system, consideration should be given to the maximum carrying capacity and its sag under a given load. When determining clearance under cable loops, allowance



must be made for sag in the wire rope supporting the system. The formula below can be used to determine the tension in the wire rope and the sag. Caution: Tension in the wire rope must not exceed 1050 pounds.

$$\text{Tension in pounds} = \frac{\text{total weight (lbs)} \times \text{length (ft)}}{8 \times \text{sag (ft)}}$$



## Series 5110 SPECIFICATIONS

**Cable Size** - for individual cables to 0.30 inches maximum thickness. (10:1 saddle diameter to cable thickness ratio.)

**Working Travel** - 16 feet through 66 feet standard. For systems with longer working travel, consult factory.

**Weight Capacity** - 9 pounds per car.

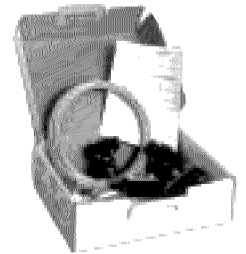
**Window Opening** - 0.88" x 2.38".

### Systems include:

- (1) 2 end clamps; (2) 1 hardware kit consisting of 2 eye-bolts, 5 clamps and 1 ball stop; (3) intermediate cars-see specified quantity; (4) nylon covered rope, required length.

Clamping distance equals distance between two cars along path of cable or hose.

**NOTE:** Festoon cable and connectors NOT INCLUDED in system number. System requirements are: working travel of 25 feet, loop depth of not more than 42 inches. Cable required is 4 conductor/#12. Additional 5 feet of cable required on each end of system for hookup.

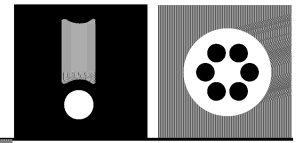


## Systems Selection -Flat Cable

System No.	A Working travel (ft)	B Loop depth (in.)	C Overall length (ft)	Max. Combined cable Wt (lbs/ft)	D Storage space (ft)	Clamp distance (ft)	No. of cars (item 3)	(CR) Cable required* (ft)
5110-02-025	16	36	18.7	1.44	1.05	6.25	2	20
	21	48	23.7	1.09	1.05	8.25	2	26
5110-04-045	27	36	30.5	1.44	1.75	6.25	4	33
	36	48	39.4	1.09	1.75	8.25	4	43
5110-06-060	38	36	42.2	1.44	2.45	6.25	6	46
	51	48	55.1	1.09	2.45	8.25	6	60
5110-08-075	50	36	54.8	1.44	3.15	6.25	8	60
	66	48	70.8	1.09	3.15	8.25	8	77

\*Add for your hook-up(s) on each end.

# Wire Rope Round Cable Systems



## Series 5120/5130

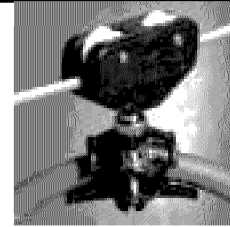
### SPECIFICATIONS

**Cable/Hose Size** for individual round cable or hose to 1.25 inches. Not recommended for hoses larger than 1/2" I.D. One additional cable or hose may be added by attaching saddle clamps 5122 or 5132 to the cable car.

**Weight Capacity** is 9 pounds per car.

**Working Travel** is 15 feet through 68 feet standard. For systems with longer working travel, consult factory.

**Clamping Distance** equal distance between two cars along path of cable or hose.



**Systems include:** (1) two end clamp assemblies; (2) one hardware kit consisting of two eye-bolts, five clamps, and one ball stop; (3) intermediate cars; (4) nylon covered wire rope, required length.

**NOTE:** Festoon cables/hose and connectors not included in system number.

### Systems Selection - Round Cable or Hose (from 0.49" to 0.91")

System	A Working Travel (ft)	B Loop Depth (in)	C Overall Length (ft)	Maximum Combined Cable Wt (lbs/ft)	D Storage Length (ft)	Clamp Distance (ft)	No. of Cars (item 3)	(CR) Cable Required* (ft)
5120-02-025	15	36	17.5	1.38	0.84	6.52	2	19
	20	48	22.5	1.05	0.84	8.52	2	24
5120-04-040	26	36	29.1	1.38	1.40	6.52	4	31
	35	48	38.1	1.05	1.40	8.52	4	41
5120-06-055	37	36	40.7	1.38	1.97	6.52	6	44
	50	48	53.75	1.05	1.97	8.52	6	59
5120-08-075	48	36	52.2	1.38	2.53	6.52	8	57
	65	48	69.2	1.05	2.53	8.52	8	76

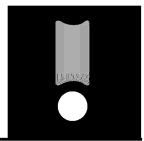
\* Add for your hook up(s) on each end.

### Systems Selection - Round Cable or Hose (from 0.91" to 1.25")

System	A Working Travel (ft)	B Loop Depth (in)	C Overall Length (ft)	Maximum Combined Cable Wt (lbs/ft)	D Storage Length (ft)	Clamp Distance (ft)	No. of Cars (item 3)	(CR) Cable Required* (ft)
5130-02-025	16	36	18.5	1.31	0.84	6.87	2	20
	21	48	23.5	1.01	0.84	8.87	2	25
5130-04-045	28	36	31.1	1.31	1.40	6.87	4	34
	37	48	40.1	1.01	1.40	8.87	4	44
5130-06-060	40	36	43.6	1.31	1.97	6.87	6	48
	52	48	55.6	1.01	1.97	8.87	6	61
5130-08-075	52	36	56.2	1.31	2.53	6.87	8	61
	68	48	72.2	1.01	2.53	8.87	8	79

\* Add for your hook up(s) on each end.

# Wire Rope Systems

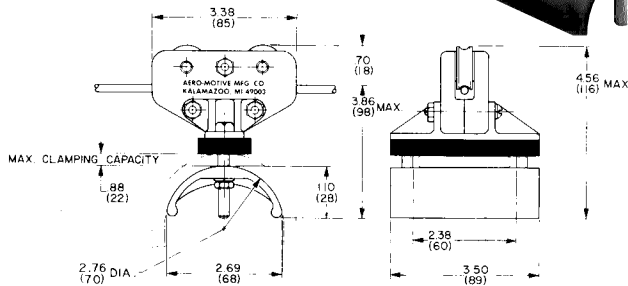


**Series 5100** Aero-Motive Wire Rope Systems handle flat cable .30" maximum thickness and round cable or hose up to 1.25" diameter.

## FLAT CABLE CAR



**Model 5111**  
Flat Cable  
Wt. 0.50 lbs.



## WIRE ROPE HARDWARE



**No. 5103 hardware kit** includes: eye bolts, five cable clamps, ball stop and fasteners.



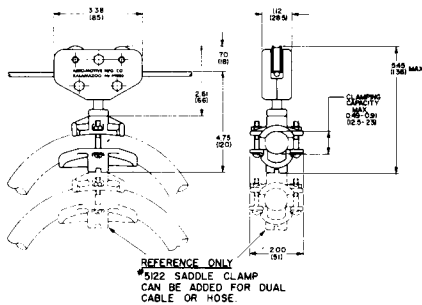
**No. 5104-Xxx\*** nylon covered wire rope. Weight is 0.065 lb/ft. \*Last three digits indicate required length in feet; e.g., 55 foot rope = catalog number 5104-55.

NOTE: Wire rope is  $\frac{3}{16}$  inch diameter nylon coated to  $\frac{1}{4}$  inch diameter. Wire rope must be nylon covered if supplied by customer.

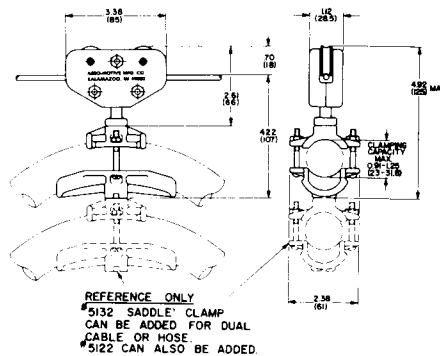
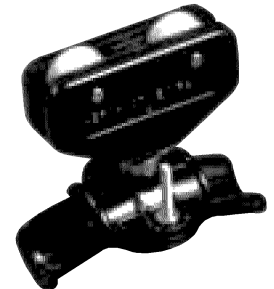
## ROUND HOSE/CABLE CAR



**Model 5121 Round Cable/Hose**  
Wt. 0.41 lbs. 0.49" to 0.91" O.D.



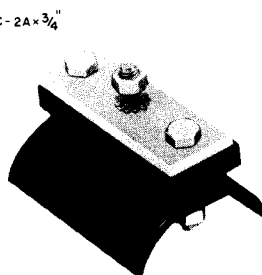
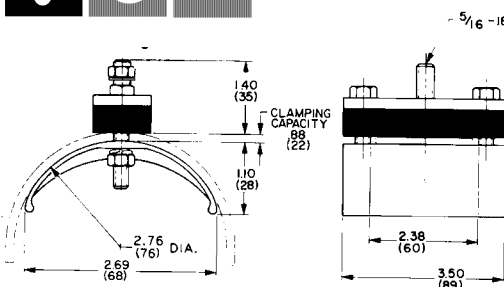
**Model 5131 Round Cable/Hose**  
Wt. 0.44 lbs. 0.91" to 1.25" O.D.



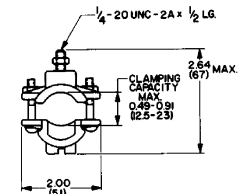
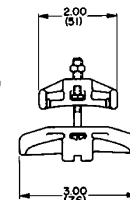
## END CLAMPS



**Model 5112** Wt. 0.62 lbs.



**Model 5122**  
For round cable or hose 0.49" to 0.91" OD



**Model 5132**  
For round cable or hose 0.91" to 1.25" OD

